

Date: 30 September 1976

Factory: John Deere Horicon Works



WEAR STRIP PROTECTS TUNNEL

All Snowmobiles With Track Studs or Cleats

Performance can often be improved by adding studs or cleats to the tracks. A claw kit (AM54311) is best suited for general, all-around snowmobiling where snow is hard packed or deep. A carbide stud kit (AM54373) is suited for operation on marginal snow or ice conditions, such as hard frozen lakes and rivers where there is little or no snow cover. These kits can be installed on both the molded grouser bar track and the 2/3 riveted grouser bar track.

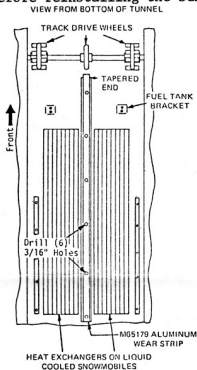
Before installing studs or cleats, install the aluminum wear strip (M65179) in the tunnel. This wear strip is necessary to protect the tunnel (and heat exchanges on liquid-cooled snowmobiles). Install as follows:

1. Remove the suspension, seat and foam strip between the heat exchangers.
2. Drill out four pop rivets which secure the fuel tank brackets, and remove the fuel tank.
3. Place the wear strip equally fore and aft in the center of the tunnel so that the tapered end of the wear strip points to the front of the snowmobile.
4. Using the wear strip as a template, drill six 3/16-inch holes through the tunnel.

IMPORTANT: Be careful not to drill through electrical wiring or heat exchangers on liquid cooled snowmobiles.

5. Pop-rivet the wear strip to the tunnel using rivets supplied with the stud or claw kit.

6. Reinstall the fuel tank, foam strip and seat. Install the studs or claws before reinstalling the suspension.



Applies to:

Please pass to:

Date

Return to:



INSTALLATION INSTRUCTIONS FOR
TUNNEL WEAR STRIPS FOR
ALL SNOWMOBILES
(SERIAL NO. 120,001-)



This instruction sheet provides information for the following kits:

AM 55180 - Trailfire and Sportfire
AM 55181 - Spitfire
AM 55182 - Liquifire

AM 55180 - contains 2 wear strips, 47" long by 0.375" thick and 12 rivets.

AM 55181 - contains 3 wear strips, 39-1/2" long by 0.375" thick and 18 rivets.

AM 55182 - contains 2 wear strips, 47" long by 0.76" thick and 12 rivets.

NOTE: The wear strip kit must be installed in the tunnel whenever the track is studded. USE ONLY THE KIT INDICATED FOR EACH SNOWMOBILE, DO NOT SUBSTITUTE.

The following procedure should be used to install any of the kits.

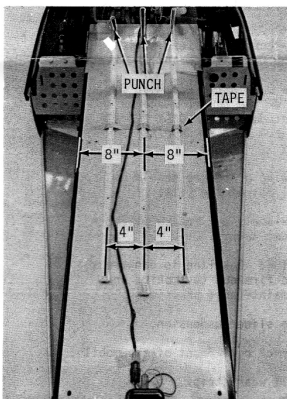
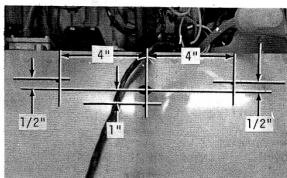
1. Remove seat, air intake silencer and fuel tank.

⚠ CAUTION: Gasoline is dangerous, avoid fire due to smoking or careless maintenance practices.

2. Remove slide suspension.
3. Lay track over front of snowmobile.
4. Install wear strips.

NOTE: Holes for wear strips are pre-punched in the tunnels up to (Serial No. -155,000), no drilling is necessary. Beginning with (Serial No. 155,001-) drilling is necessary, see instructions on page 2.

5. Install rivets from top side of tunnel.

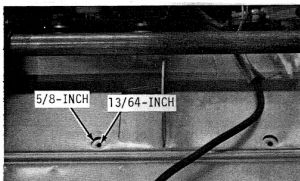


SPITFIRE

1. Locate the front 3 holes off the hole in the center of the tunnel. See photo at left. Use a 13/64-inch drill to drill the holes.
2. Lay wear strips on top of tunnel, flat side down.
3. Use punches to align the wear strips with the holes drilled in Step 1.
4. Align center holes of wear strip exactly 4-inches apart. See photo at left. Tape wear strips in place.

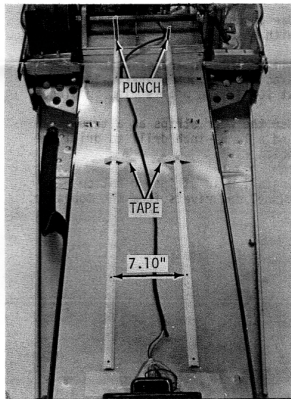
NOTE: Install center wear strip first, in center of tunnel, 8-inches in from each edge.

5. Use the wear strips as a template and a 13/64-inch drill to drill the holes.
6. Install wear strips on bottom of tunnel and rivets from the top side.

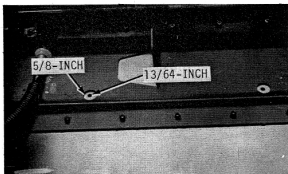


TRAILFIRE AND SPORTFIRE

1. Drill a 13/64-inch hole directly in the center of each of the 5/8-inch holes in the closeout panel. See photo at left.
2. Lay wear strips on top of tunnel, flat side down.



3. Use punches to align the wear strips with the holes drilled in Step 1.
4. Align center holes of wear strips exactly 7.10-inches apart. See photo at left. Tape wear strips in place.
5. Use the wear strips as a template and a 13/64-inch drill to drill the holes.
6. Install wear strips on bottom of tunnel and rivets from the top side.



LIQUIFIRE

1. Drill a 13/64-inch hole directly in the center of each of the 5/8-inch holes in the closeout panel. See photo at left.

2. Lay wear strips on top of tunnel, flat side down.

3. Use punches to align the wear strips with holes drilled in Step 1.

4. Align center holes of wear strips exactly 8.0-inches apart. See photo at left. Tape wear strips in place.

5. Use the wear strips as a template and a 13/64-inch drill to drill the holes.

6. Install wear strips on bottom of tunnel and rivets from the top side.

